



# NW BAND BOOSTER NEWS

December 2010

## Band Booster Officer Team

President: Chuck King [sales@canalfultonpc.com](mailto:sales@canalfultonpc.com)  
Vice President: Margaret Porter [margP97@sbcglobal.net](mailto:margP97@sbcglobal.net)  
Treasurer: Diane Knight [ladyknight@sssnet.com](mailto:ladyknight@sssnet.com)  
Secretary: Laura Doyle [ldoyle@louisville.sparcc.org](mailto:ldoyle@louisville.sparcc.org)

[www.northwestband.com](http://www.northwestband.com)

---

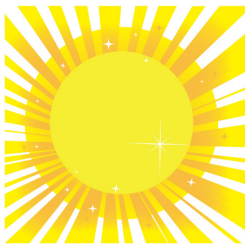
A thank you to concert band, jazz band, symphonic band and our directors for their holiday performances: The Christmas Parade and the Christmas Concert! A special thank you, also, to the brass quintet of Lauren Butti, Heather Butti, Maddie Kurtz, Jacob Lovin, and Connor Doyle who played in the lobby before the concert and also traveled to area nursing homes to share their talents. What a great way to get into the spirit of the season!



---

**Next Band Booster Meeting:** All band parents are invited to attend our monthly meetings. Stay informed! Our next meeting will be Thursday, January 13<sup>th</sup> at 7:30 pm in the choir room.

---



## A Disney Update from Mr. Masowich!

Dear Parent:

**Balance due this Friday!**

This letter is to supply you with pertinent information for the upcoming Florida Band trip. Please carefully read the following information with you son/daughter.

**HOTEL** – Disney’s All Star Music  
1801 West Buena Vista Drive  
Lake Buena Vista, Florida 32830  
407-939-6000

**DEPARTURE** - From Northwest High School, 3/23/2011, 4:00 P.M.(Arrive at 3:00 to begin loading busses) Luggage can be placed in the band room Thursday morning.

**RETURN** - To Northwest 3/28/2011, 3:00 P.M. (If the busses are running late, a contact person will be called and will notify you in the school parking lot with the new arrival time).

**DISNEY PERFORMANCE** - Friday March 25th, at Magic Kingdom, 2:30 parade.

**ATTRACTIONS** – Thursday afternoon – Daytona Beach; Friday – Magic Kingdom; Saturday – Water park and Medieval Times Dinner Theater; Sunday – Epcot

**1 SUITCASE** - Clothing, spending money, **WHITE BAND SHOES, WHITE SOCKS, BAND HAT, WHITE GLOVES**, personal needs. Do not bring many valuables. This suitcase will be stored under the bus in the storage compartment. You will not be able to access it until we arrive at the hotel Friday evening.

**BAND UNIFORM** – In a garment bag (student supplies), on a hanger, stored on the shelf above your bus seat. It will stay on the bus at all times.

**TOTE BAG** - Snacks, camera and film, hat, sun tan lotion, sunglasses, swimsuit, beach towel, toothbrush and paste, etc. This will be placed in the storage compartment above your bus seat.

**INSTRUMENT** - In bus storage compartment.

**MEDICATION** - Please notify Mr. Masowich in writing if medication is required on the trip.

**STEREOS** - No open speakers on the bus. Use headphones.

**IDENTIFICATION** - Each student should have proper I.D. on them at all times. This should include a 3 x 5 card stating: name, hotel we're staying at, and our group name.

**March 23rd DINNER** - We'll stop for fast food approx. 7:00 P.M.

**MEALS NOT INCLUDED IN THE TOUR PACKAGE** - 2 breakfasts (Thursday and Monday); 4 lunches; 1 dinner (Thursday) - assuming 3 meals a day.

**RULES** - We will employ basic, common sense rules throughout the trip. They are reasonable and we expect cooperation from all students. If a problem arises, and a student is not listening to us, a call will be placed home to the parents. If the call fails to improve the behavior, that individual will stay at the hotel the next day (with a chaperone) and will not participate in the day's activities. Monetary refunds will not be issued. **Any student using, or in the possession of tobacco, alcohol, or drugs will be taken to the local police. Further disciplinary action will be handled by the school.**

**OUT OF TOWN** - If you will not be at home while we are in Florida, please give me, in writing, your location and phone number in case of an emergency.

Please encourage your son/daughter to be on his/her best behavior for the trip. I consider it a heavy responsibility to be in charge of so many people for 6 days, 1100 miles from home. If you have any questions, please call.

Sincerely,

Garry Masowich

